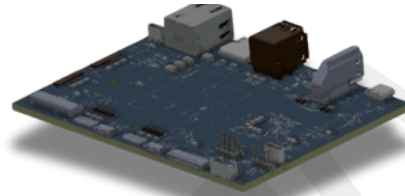
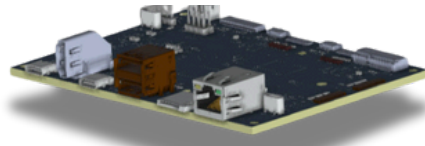
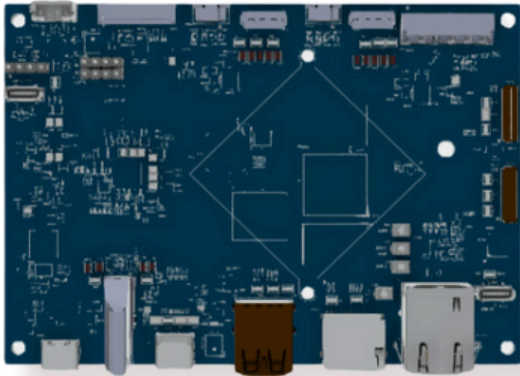


COMING SOON!

MEDIATEK
yocto
PROJECT

Features

- ARM Qual-Core Cortex A78, 2GHz+ Qual-Core Cortex A55, 2GHz
- Built-in Integrated Mali-G57 GPU for High performance multimedia processing with low power consumption
- With 3.2 TOPS Embedded powerful APU, excel in real-time intelligent processing.
- Variety of display outputs for option: MIPI-DSI, eDP, Type-C w/ DP Alt mode
- Dual displays support, up to 4Kp60+ 2Kp60
- Multiple and rich Interface for application: 2x MIPI-CSI for Camera, 2x USB 3.0 Type A, 2x UART, audio out, 1x Giga Ethernet
- Support Android and Linux Yocto

Introduction

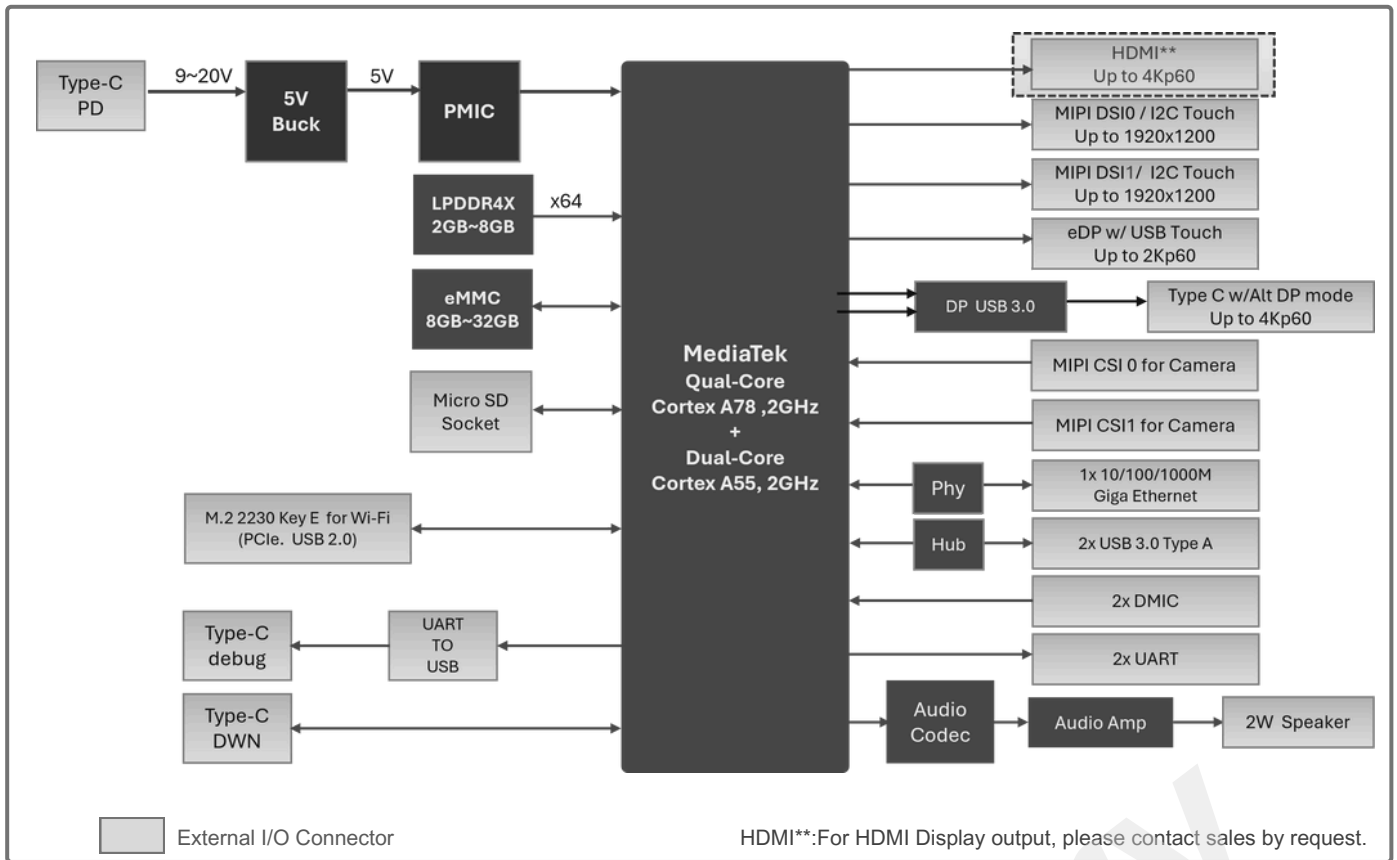
MBX-MG510 is our latest evaluation board, utilizing MediaTek® Genio 510(MT8370) chip, features ARM Quad-Core Cortex A78 and Dual-Core Cortex A55 processors with frequencies up to 2GHz, efficiently handling complex computational tasks ideal for industrial automation and smart manufacturing. The integrated Mali-G57 GPU offers high-performance multimedia processing, while the embedded 3.2 TOPS APU excels in real-time intelligent processing, making it perfect for intelligent retail, self-service terminals, smart home, and smart security applications. The board supports multiple display outputs including MIPI-DSI, eDP, and Type-C w/ DP Alt mode, and dual display support up to 4Kp60 and 2Kp60. Additionally, it boasts rich interfaces such as 2x MIPI-CSI camera interfaces, 2x USB 3.0 ports, 2x UART ports, audio output, and Gigabit Ethernet, providing extensive connectivity and data transfer capabilities. Supporting both Android and Linux Yocto, this board is an ideal choice for intelligent transportation and environmental monitoring.

Specification

System	Processor	MediaTek Genio 510 Dual Core, Cortex A78, 2GHz + Qual Core, Cortex-A55, 2GHz
	RAM	LPDDR4X onboard, up to 8GB (Default: 4GB)
	Storage	eMMC onboard, from 8 to 32GB
	Display	MIPI DSI, up to 1920x1200; eDP, up to 2Kp60; Type-C w/ DP Alt mode, up to 4Kp60 HDMI 2.0, up to 4Kp60 (For HDMI Optional, please contact for request)
	Touch	Support via I2C/USB Touch controller
	Camera	MIPI CSI, Dual Camera supports 16MP+16MP@fps
	Ethernet	1x 10/100/1000M Gigabit Ethernet



Block Diagram



Specification

I/O Interface	Display	2x MIPI-DSI , 1x eDP port, 2xType-C w/ DP Alt mode
	Camera	2x MIPI-CSI
	Ethernet	1x RJ45 Connector w/ LED indicator
	USB Port	2x USB 3.0 Type A, 1x Type-C for Debug, 1x Type-C for Download
	UART	2
	Audio	1x 2W speaker, 2x DMIC
Expansion	M.2	1x M. 2 2230 Key E Slot
	SD Socket	1x Micro SD Slot
Power Input		via USB-C PD, 9V~20V
Form Factor		124 x 90 mm (in Temporary)
Operating Temperature		-10°C ~ 70°C
Operating System		Linux Yocto, Android